

## Digital Brand Marketing

**Interactive, secure and reliable digital communications**

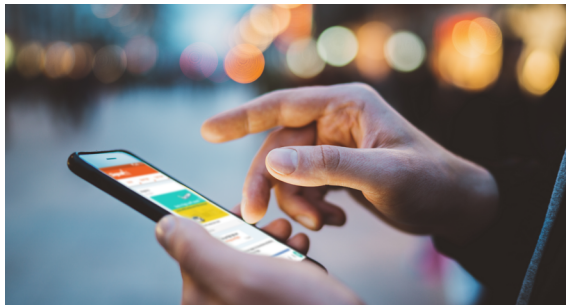
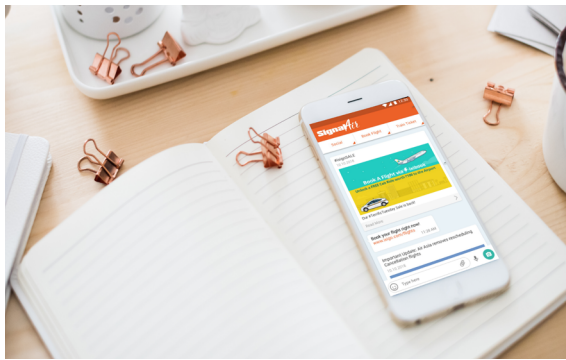
Customers have options. In order to reach audiences, brand and marketing messages must be compelling and engaging. Your brand is distinctive, and your enterprise needs an interactive, secure and reliable way to reach your audiences in a way that stands out from the crowd. Engage@Work is a first of its kind application that is as distinguished as your brand.

- ✓ **Messaging**
- ✓ **Channels**
- ✓ **Text**
- ✓ **Video**
- ✓ **Voice**

Radisy's Engage@Work is a communication and digital engagement solution that integrates multi-media communication such as messaging, voice calling, video conferencing and channels in a single application to allow businesses to communicate effectively with their audiences. Capable of supporting all platforms—desktop, web, iOS, Android and feature phones on 2G through 5G and WiFi—Engage@Work delivers extensive communication capabilities directly to the mobile device—ensuring that your followers have access to the information they need at all times regardless of their location.

### **Immersive | Interactive | Distinctive**

Communication and engagement must be mobile and take place in real-time, and it must be interactive, simple and contextual. Traditionally, organizations have been forced to use multiple channels and applications to communicate with their communities. Engage@Work changes this paradigm. An agile and robust application, Engage@Work is an extensible solution that brings together communications and digital engagement in one application.



Announce new releases

Broadcast promotions and updates

Diversify your marketing demographically, by region

Distribute policies

List products and offerings

Receive feedback, questions and messages from customers

Advertise special events

Build authentic connections with your audiences

Highlight your community involvement

Post exclusive “behind the scenes” content, user guides, etc.

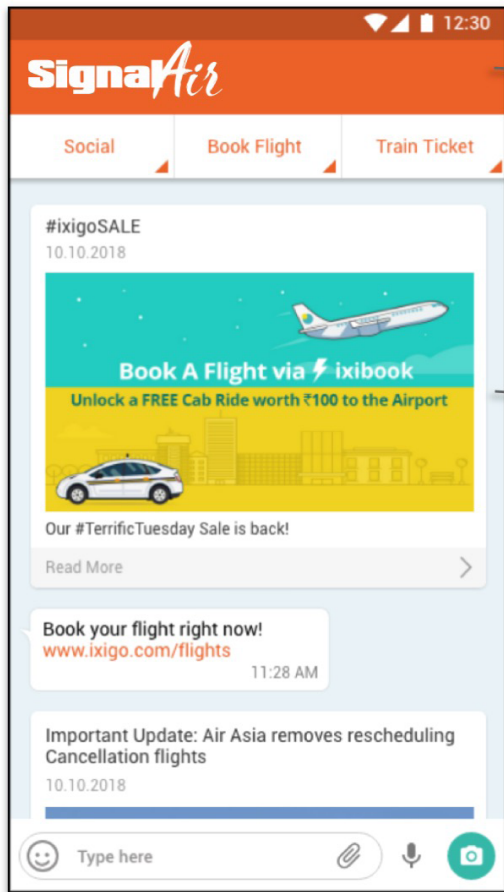
Showcase subject-matter expertise

## KEY BENEFITS

- Unlimited number of interactive channels to address all user demographics
- Ease-of-use – audio and video conferencing capabilities on mobile devices with no additional software to download
- Ability to easily integrate widgets for productivity, commerce and more
- Secure one-to-one interactions with consumers for a “no trolling environment”
- Support for all platforms—desktop, web, iOS, Android and feature phones
- Scalable mobile solution capable of supporting large enterprises with up to 500 member groups
- Detailed analytics provide actionable data on follower metrics and response rates by the channel administrator



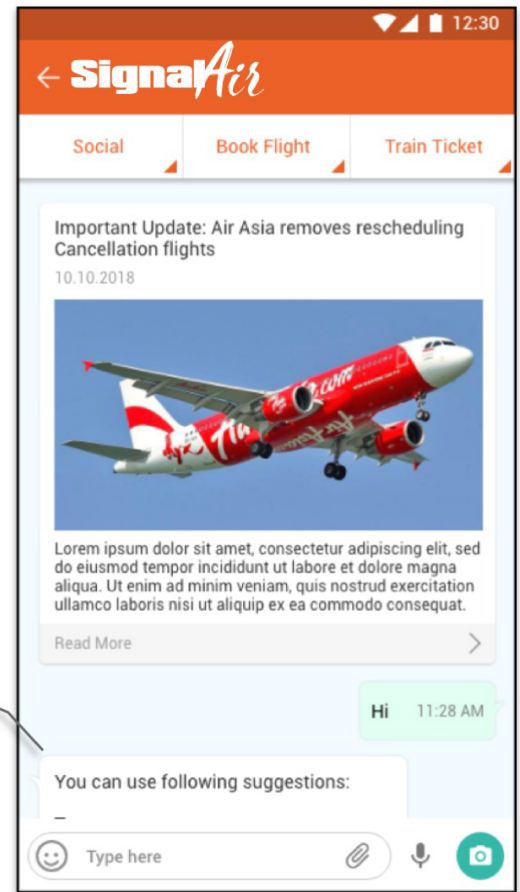
Engage@Work upgrades the communication and digital engagement experience, providing a seamless, feature-rich application that delivers a consistent and user-friendly experience for your brand marketing.



Brands can send promotional messages to its users over a chat interface. The messages can have CTAs for efficient conversions.

Brands can also include discounts or special promotions in their messages to customers to ensure they continue to stay engaged.

Brands can send important updates to its users over the chat interface.



## FEATURES



### Broadcast Messages

Send a text message up to 100 contacts at once



### 2-way Interactive Channels

Administered channel with BOT Integration



### Audio & Video Conference

Up to 5 people at a time



### Text Messages

Send UNLIMITED Text Messages



### Live Video Streaming

Live streaming of key events directly in the chat interface possible



### Language Customization

Your app in your language



### Share Any File

One-tap sharing of all photos, videos, PDF, Excel, Word



### 500 Member Groups

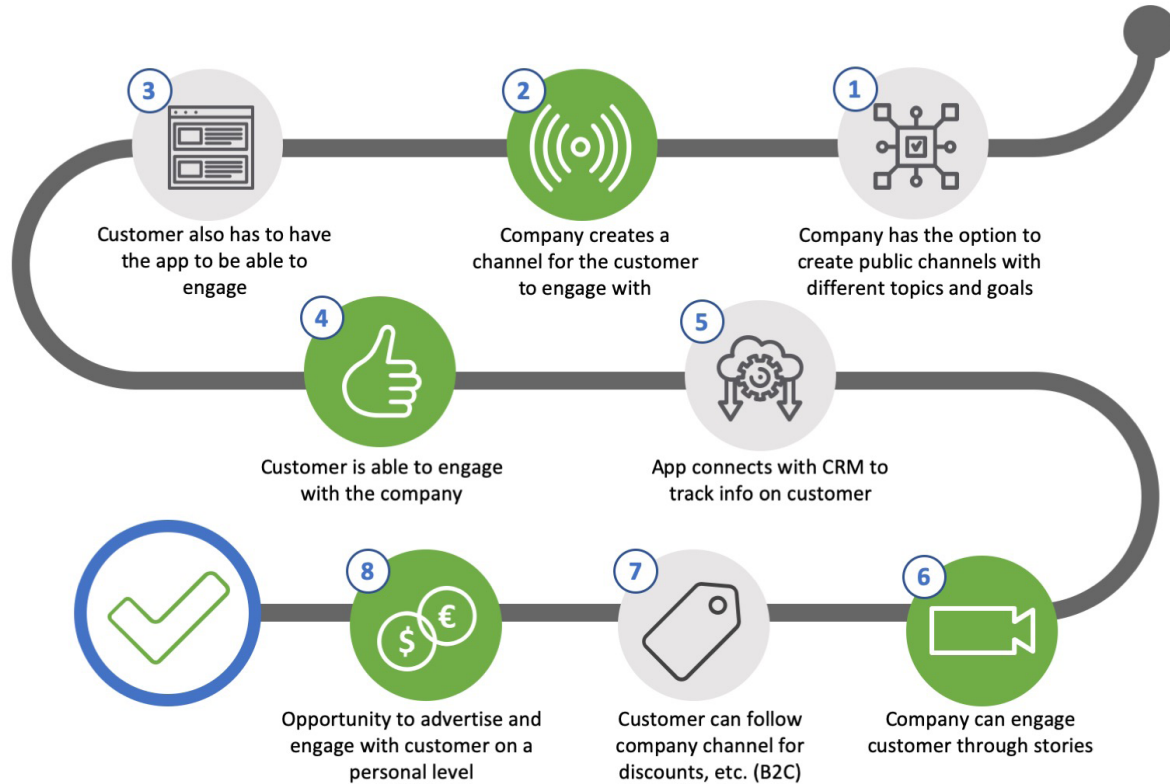
Large group size for inclusivity



### Voice Notes

On messaging

Employing Engage@Work will simplify your organizational communications without increasing your operational workload. All platforms are supported—web, iOS, Android and feature phones—and easily managed via an online web portal or an internally hosted portal.



## Why choose Engage@Work?

Keeping your audiences connected and informed with multi-media content that is accessible from anywhere at all times is easier than ever with Engage@Work. This all-in-one application fosters efficient communications, saves time and optimizes operations without adding overhead cost.

- Real time digital communications and engagement
- Multiple media formats supported
- Efficient, all-in-one application
- Simple and secure
- Accessible anytime, anywhere
- Easily customized



CORPORATE HEADQUARTERS: 5435 NE Dawson Creek Drive | Hillsboro, OR 97124 | USA  
+1-503-615-1100 | 800-950-0044 | Fax +1-503-615-1121 | [www.radisyS.com](http://www.radisyS.com) | [info@radisyS.com](mailto:info@radisyS.com)  
©2019 RadisyS Corporation. RadisyS is a registered trademark of RadisyS Corporation. All other trademarks are the properties of their respective owners. September 2019